

# **\$479,900 - 3907 20 Avenue, Edmonton**

MLS® #E4439316

**\$479,900**

6 Bedroom, 3.00 Bathroom, 1,098 sqft

Single Family on 0.00 Acres

Daly Grove, Edmonton, AB

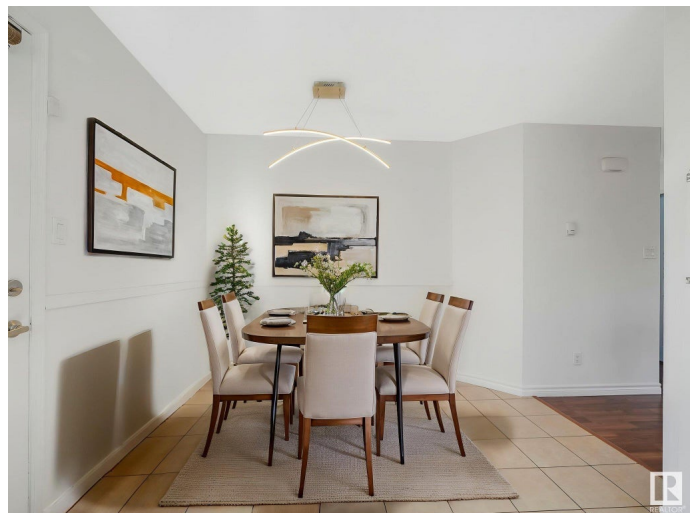
Welcome to a truly special opportunity in South Edmonton—an exceptional WALK UP BI-LEVEL of unbeatable value w/ almost 2,100 SQFT of developed space. This WELL-CARED-for home stands out for its solid craftsmanship, LAYOUT & ABUNDANT SPACE. Upon entry, you™ll be greeted by LARGE BRAND NEW WINDOWS, illuminating every corner of this NEWLY PAINTED home. The UPDATED kitchen, outfitted w/ QUARTZ COUNTERTOPS is a cheerful hub for daily life—a SPACIOUS DINING AREA perfect for family gatherings or guests. Boasting a total of 6 BEDRMS & 3 FULL BATHS, inclng a generous 4PC ENSUITE in the PRIMARY SUITE, this home offers incredible flexibility for large families, multi-generational living, or savvy investors. The FULLY FNSHD WALKUP BSMNT adds even more value w/ 3 ADDTL BEDRMS, a FULL BATH, a LARGE FAMILY RM & 2ND KITCHEN; SEPARATE ENTRNCE —ideal for a future SUITE! Start your summer in your SOUTH-FACING BACKYRD WITH DECK & OVERSIZED DOUBLE GARAGE & extra PARKING SPACE! Close to SCHOOLS, PARKS, PUBLIC TRNSIT & SHOPPING.

Built in 1989

## **Essential Information**

MLS® #

E4439316



Price	\$479,900
Bedrooms	6
Bathrooms	3.00
Full Baths	3
Square Footage	1,098
Acres	0.00
Year Built	1989
Type	Single Family
Sub-Type	Detached Single Family
Style	Bi-Level
Status	Active

### Community Information

Address	3907 20 Avenue
Area	Edmonton
Subdivision	Daly Grove
City	Edmonton
County	ALBERTA
Province	AB
Postal Code	T6L 5G3

### Amenities

Amenities	Deck, Detectors Smoke, No Animal Home, No Smoking Home, Parking-Extra
Parking Spaces	6
Parking	Double Garage Detached

### Interior

Interior Features	ensuite bathroom
Appliances	Dishwasher-Built-In, Dryer, Hood Fan, Oven-Microwave, Washer, Refrigerators-Two, Stoves-Two
Heating	Forced Air-1, Natural Gas
Stories	2
Has Suite	Yes
Has Basement	Yes
Basement	Full, Finished

### Exterior

Exterior	Wood, Vinyl
----------	-------------

Exterior Features	Back Lane, Fenced, Landscaped, Playground Nearby, Public Transportation, Schools, Shopping Nearby
Roof	Asphalt Shingles
Construction	Wood, Vinyl
Foundation	Concrete Perimeter

**School Information**

Elementary	Bisset School
Middle	Kate Chegwin School
High	W.P. Wagner School

**Additional Information**

Date Listed	May 29th, 2025
Days on Market	4
Zoning	Zone 29

DATA IS DEEMED RELIABLE BUT IS NOT GUARANTEED ACCURATE BY THE REALTORS® ASSOCIATION OF EDMONTON. COPYRIGHT 2025 BY THE REALTORS® ASSOCIATION OF EDMONTON. ALL RIGHTS RESERVED.Trademarks are owned or controlled by the Canadian Real Estate Association (CREA) and identify real estate professionals who are members of CREA (REALTOR®, REALTORS®) and/or the quality of services they provide (MLS®, Multiple Listing Service®)

Listing information last updated on June 2nd, 2025 at 1:32am MDT