

\$600,000 - 33 Goodridge Drive, St. Albert

MLS® #E4436861

\$600,000

4 Bedroom, 2.50 Bathroom, 2,286 sqft

Single Family on 0.00 Acres

Grandin, St. Albert, AB

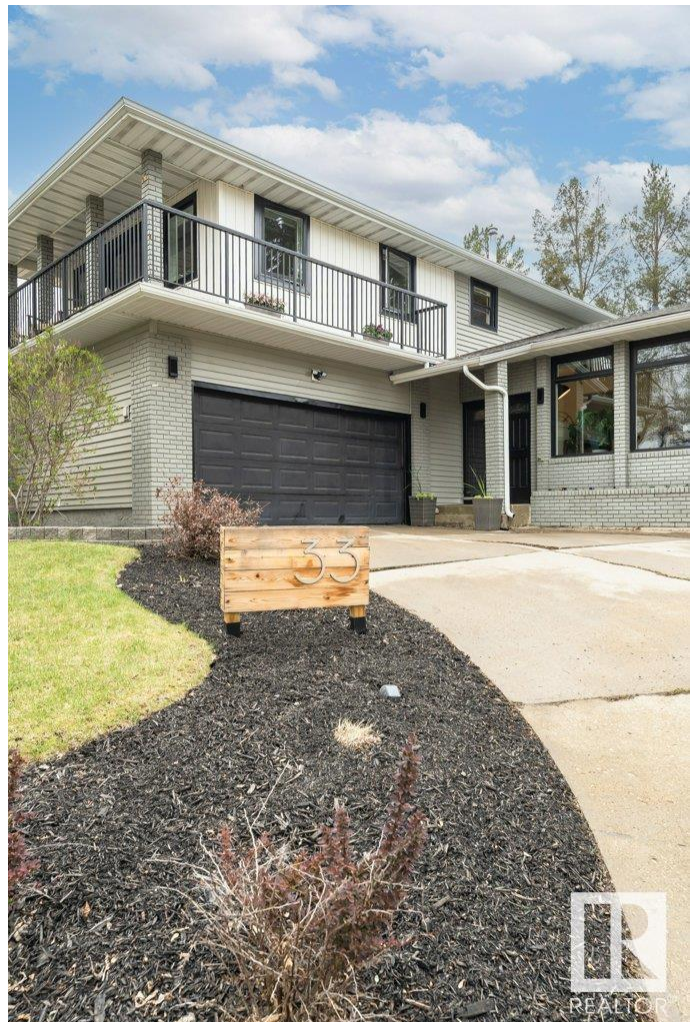
Grande on Goodridge! This extensively renovated 4 Bdrm- 2 storey home is a perfect blend of Modern Charm & Character. Welcomed by the Inviting Curb Appeal & Spacious foyer, the NATURAL LIGHT throughout is abundant. A Traditional main floor layout with the front formal living room, Expansive and Updated eat-in Kitchen- Large Center Island, Extended Cabinets and Built-Ins + pantry - Overlooks the family room and provides access to the serene and private yard. Upstairs, A true Owners Retreat-King Sized w/ Spacious walk in closet (custom shelving) & SPA ensuite - Double sinks and Oversized Glass Shower + A Balcony! 2 additional bedrooms and 4 pc Guest Bath complete the second level. With the lower level featuring an additonal bedroom, 2 more recreation spaces + storage galore.. the possibilities are endless for use of space and LOTS of room to roam! Hardwood Floors and Fresh paint throughout + Oversized Dbl Garage- Newer Windows/Shingles/Furnace. The true charm of St.Albert living- Easy to fall in love with!

Built in 1974

Essential Information

MLS® # E4436861

Price \$600,000



Bedrooms	4
Bathrooms	2.50
Full Baths	2
Half Baths	1
Square Footage	2,286
Acres	0.00
Year Built	1974
Type	Single Family
Sub-Type	Detached Single Family
Style	2 Storey
Status	Active

Community Information

Address	33 Goodridge Drive
Area	St. Albert
Subdivision	Grandin
City	St. Albert
County	ALBERTA
Province	AB
Postal Code	T8N 2A9

Amenities

Amenities	Deck
Parking Spaces	4
Parking	Double Garage Attached, Over Sized

Interior

Interior Features	ensuite bathroom
Appliances	Dishwasher-Built-In, Dryer, Garage Control, Garage Opener, Hood Fan, Refrigerator, Stove-Gas, Washer
Heating	Forced Air-1, Natural Gas
Stories	3
Has Basement	Yes
Basement	Full, Finished

Exterior

Exterior	Wood, Brick, Stucco
Exterior Features	Fenced, Landscaped, Playground Nearby, Public Transportation, Schools, Shopping Nearby

Roof	Asphalt Shingles
Construction	Wood, Brick, Stucco
Foundation	Concrete Perimeter

Additional Information

Date Listed	May 16th, 2025
Days on Market	4
Zoning	Zone 24



DATA IS DEEMED RELIABLE BUT IS NOT GUARANTEED ACCURATE BY THE REALTORS® ASSOCIATION OF EDMONTON. COPYRIGHT 2025 BY THE REALTORS® ASSOCIATION OF EDMONTON. ALL RIGHTS RESERVED.Trademarks are owned or controlled by the Canadian Real Estate Association (CREA) and identify real estate professionals who are members of CREA (REALTOR®, REALTORS®) and/or the quality of services they provide (MLS®, Multiple Listing Service®)

Listing information last updated on May 19th, 2025 at 10:17pm MDT