

\$525,000 - 7224 11 Avenue, Edmonton

MLS® #E4436217

\$525,000

4 Bedroom, 3.00 Bathroom, 1,556 sqft

Single Family on 0.00 Acres

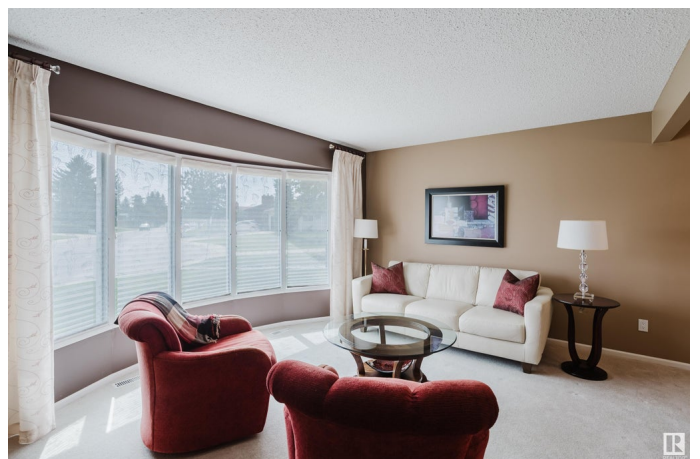
Menisa, Edmonton, AB

This stunning bungalow offers over 2,700 sq. ft. of beautifully finished living space, featuring 4 spacious bedrooms and 3 full bathrooms. The bright, open-concept kitchen is a chef's dream, complete with a large center island, ample cabinetry, and generous counter space. Enjoy elegant dinners in the formal dining room or unwind in the inviting living room with its classic brick fireplace. The fully developed basement has a separate entrance and includes a large family room with a wet bar—perfect for entertaining—as well as a fourth bedroom, a full bathroom, and an expansive laundry and storage area. Step outside to a meticulously landscaped and fully fenced backyard, ideal for relaxing summer days. There's an oversized rear driveway with alley access leading to the detached double garage providing options for RV Parking. Located close to major roadways, schools, playgrounds, and all essential amenities, this home offers both comfort and convenience in a prime location.

Built in 1978

Essential Information

MLS® #	E4436217
Price	\$525,000
Bedrooms	4



Bathrooms	3.00
Full Baths	3
Square Footage	1,556
Acres	0.00
Year Built	1978
Type	Single Family
Sub-Type	Detached Single Family
Style	Bungalow
Status	Active

Community Information

Address	7224 11 Avenue
Area	Edmonton
Subdivision	Menisa
City	Edmonton
County	ALBERTA
Province	AB
Postal Code	T6K 3R1

Amenities

Amenities	Deck, Front Porch, Patio, Sprinkler Sys-Underground, Wet Bar
Parking Spaces	4
Parking	Double Garage Detached

Interior

Interior Features	ensuite bathroom
Appliances	Dishwasher-Built-In, Dryer, Garage Control, Garage Opener, Microwave Hood Fan, Refrigerator, Stove-Electric, Washer, Window Coverings, See Remarks, Projector
Heating	Forced Air-1, Natural Gas
Stories	2
Has Basement	Yes
Basement	Full, Finished

Exterior

Exterior	Wood, Stone, Vinyl
Exterior Features	Back Lane, Cul-De-Sac, Fenced, Flat Site, Fruit Trees/Shrubs, Landscaped, Level Land, Playground Nearby, Private Setting, Schools, Shopping Nearby, Treed Lot, See Remarks

Roof	Asphalt Shingles
Construction	Wood, Stone, Vinyl
Foundation	Concrete Perimeter

Additional Information

Date Listed	May 13th, 2025
Days on Market	3
Zoning	Zone 29

DATA IS DEEMED RELIABLE BUT IS NOT GUARANTEED ACCURATE BY THE REALTORS® ASSOCIATION OF EDMONTON. COPYRIGHT 2025 BY THE REALTORS® ASSOCIATION OF EDMONTON. ALL RIGHTS RESERVED.Trademarks are owned or controlled by the Canadian Real Estate Association (CREA) and identify real estate professionals who are members of CREA (REALTOR®, REALTORS®) and/or the quality of services they provide (MLS®, Multiple Listing Service®)

Listing information last updated on May 16th, 2025 at 12:02pm MDT