

\$749,900 - 12508 42 Avenue, Edmonton

MLS® #E4436105

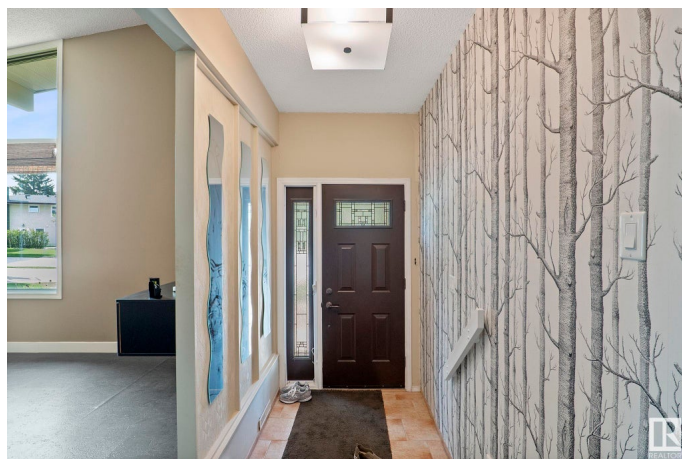
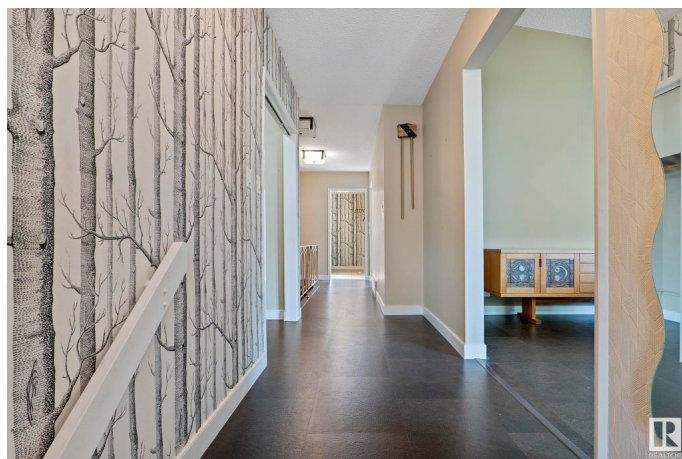
\$749,900

5 Bedroom, 3.00 Bathroom, 1,722 sqft

Single Family on 0.00 Acres

Aspen Gardens, Edmonton, AB

RARE OPPORTUNITY to own a pie lot in Aspen Gardensâ€™™ most coveted location! Nestled on one of the most desirable streets in the heart of the neighbourhood, this expansive 8,125 sq ft lot is just steps from the scenic Whitemud Creek Ravine. Build your dream home here! This updated 3+2 bed, 3 bath bungalow features vaulted ceilings and recent upgrades throughout. The main floor offers a bright living/dining space with soaring ceilings and an updated kitchen with white cabinetry, stainless steel appliances, quartz island, and a functional mudroom/pantry/laundry room. Three spacious bedrooms and two full baths, including a primary ensuite, complete the main level. The fully finished basement includes two more bedrooms, a full bath, large rumpus room, and ample storage. Spacious backyard with mature trees! Double attached & single detached garage! Walking distance to top-rated schools, trails, & parksâ€™™this is your chance to build the lifestyle & home you've dreamed of in prestigious Aspen Gardens. Welcome home!



Built in 1966

Essential Information

MLS® # E4436105

Price \$749,900

| | |
|----------------|------------------------|
| Bedrooms | 5 |
| Bathrooms | 3.00 |
| Full Baths | 3 |
| Square Footage | 1,722 |
| Acres | 0.00 |
| Year Built | 1966 |
| Type | Single Family |
| Sub-Type | Detached Single Family |
| Style | Bungalow |
| Status | Active |

Community Information

| | |
|-------------|-----------------|
| Address | 12508 42 Avenue |
| Area | Edmonton |
| Subdivision | Aspen Gardens |
| City | Edmonton |
| County | ALBERTA |
| Province | AB |
| Postal Code | T6J 0X3 |

Amenities

| | |
|-----------|--|
| Amenities | Deck, No Smoking Home, Vaulted Ceiling |
| Parking | Double Garage Attached, Single Garage Detached |

Interior

| | |
|-------------------|--|
| Interior Features | ensuite bathroom |
| Appliances | Dishwasher-Built-In, Dryer, Freezer, Storage Shed, Stove-Electric, Washer, Window Coverings, Refrigerators-Two |
| Heating | Forced Air-1, Natural Gas |
| Stories | 2 |
| Has Basement | Yes |
| Basement | Full, Finished |

Exterior

| | |
|-------------------|--|
| Exterior | Wood, Stucco |
| Exterior Features | Fenced, Flat Site, Golf Nearby, Landscaped, Playground Nearby, Schools, Shopping Nearby, Ski Hill Nearby |
| Roof | Asphalt Shingles |
| Construction | Wood, Stucco |

Foundation Concrete Perimeter

School Information

Elementary WESTBROOK SCHOOL
Middle VERNON BARFORD SCHOOL
High HARRY AINLAY SCHOOL

Additional Information

Date Listed May 13th, 2025
Days on Market 5
Zoning Zone 16

DATA IS DEEMED RELIABLE BUT IS NOT GUARANTEED ACCURATE BY THE REALTORS® ASSOCIATION OF EDMONTON. COPYRIGHT 2025 BY THE REALTORS® ASSOCIATION OF EDMONTON. ALL RIGHTS RESERVED.Trademarks are owned or controlled by the Canadian Real Estate Association (CREA) and identify real estate professionals who are members of CREA (REALTOR®, REALTORS®) and/or the quality of services they provide (MLS®, Multiple Listing Service®)
Listing information last updated on May 18th, 2025 at 6:02pm MDT