

\$585,000 - 7009 105a Street, Edmonton

MLS® #E4435676

\$585,000

4 Bedroom, 1.50 Bathroom, 1,467 sqft

Single Family on 0.00 Acres

Queen Alexandra, Edmonton, AB

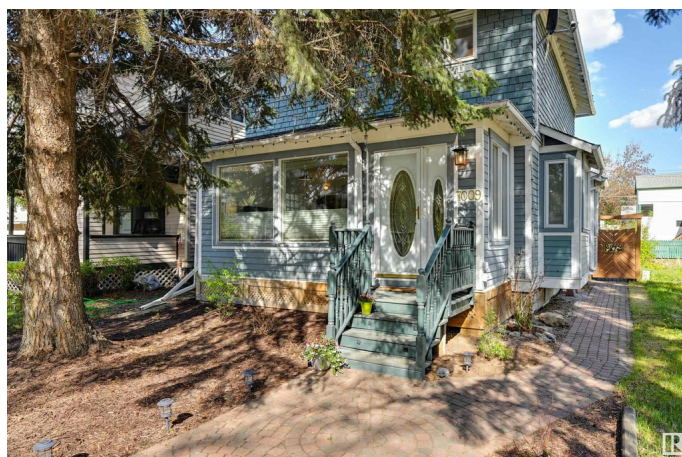
Upgraded Character Home in Beautiful Queen Alexandra! This home has been thoughtfully preserved & beautifully updated, blending timeless charm with modern comforts throughout. Recently redone exterior with upgraded insulation. Through the front doors, the bright, sunny & open concept living space unfolds. Beautiful hardwood flooring with custom wood details flow throughout. The living room enjoys a wood burning fireplace & original ceiling details. Next is the kitchen & dining room with direct access to the back deck, perfect for entertaining or outdoor dining! The kitchen features tons of custom wood cabinetry, granite counters, & a pantry. Perfect for anyone who loves to cook! Off of the kitchen is a mudroom & powder room. Upstairs: three spacious bedrooms & a fully upgraded/renovated bathroom with a soaker tub & terrazzo flooring. Downstairs you will find storage, laundry, a high efficiency furnace, & guest room. Double garage with loft & RV parking pad, and a fully landscaped low maintenance backyard!

Built in 1910

Essential Information

MLS® # E4435676

Price \$585,000



Bedrooms	4
Bathrooms	1.50
Full Baths	1
Half Baths	1
Square Footage	1,467
Acres	0.00
Year Built	1910
Type	Single Family
Sub-Type	Detached Single Family
Style	2 Storey
Status	Active

Community Information

Address	7009 105a Street
Area	Edmonton
Subdivision	Queen Alexandra
City	Edmonton
County	ALBERTA
Province	AB
Postal Code	T6H 2R6

Amenities

Amenities	Deck, Skylight, Vaulted Ceiling, Wood Windows, Workshop
Parking	Double Garage Detached

Interior

Appliances	Dishwasher-Built-In, Dryer, Garage Opener, Microwave Hood Fan, Refrigerator, Stove-Electric, Washer
Heating	Forced Air-1, Natural Gas
Fireplace	Yes
Fireplaces	Heatilator/Fan
Stories	2
Has Basement	Yes
Basement	Partial, Partially Finished

Exterior

Exterior	Wood
Exterior Features	Back Lane, Fenced, Low Maintenance Landscape, Playground Nearby, Public Swimming Pool, Public Transportation, Schools, Shopping

	Nearby
Roof	Asphalt Shingles
Construction	Wood
Foundation	Block

Additional Information

Date Listed	May 9th, 2025
Days on Market	10
Zoning	Zone 15

DATA IS DEEMED RELIABLE BUT IS NOT GUARANTEED ACCURATE BY THE REALTORS® ASSOCIATION OF EDMONTON. COPYRIGHT 2025 BY THE REALTORS® ASSOCIATION OF EDMONTON. ALL RIGHTS RESERVED. Trademarks are owned or controlled by the Canadian Real Estate Association (CREA) and identify real estate professionals who are members of CREA (REALTOR®, REALTORS®) and/or the quality of services they provide (MLS®, Multiple Listing Service®)

Listing information last updated on May 19th, 2025 at 3:17pm MDT