

\$699,900 - 71 Chelles Wynd, St. Albert

MLS® #E4432038

\$699,900

3 Bedroom, 2.50 Bathroom, 2,509 sqft
Single Family on 0.00 Acres

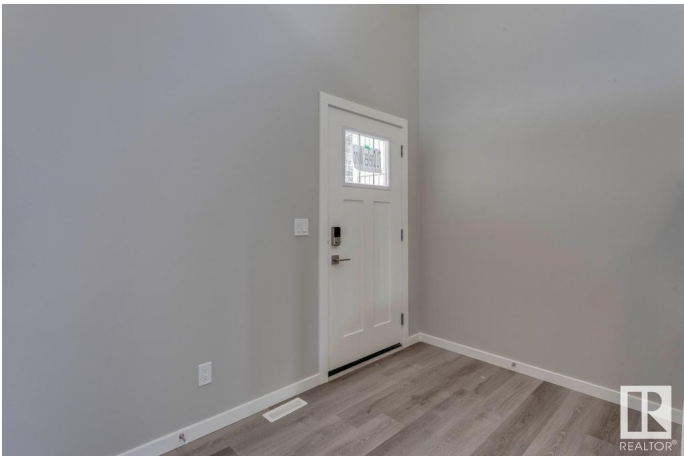
Cherot, St. Albert, AB

Quick Possession & Steps from Paris Park!
Welcome to the stunning Remi model in Cherot, offering French farmhouse charm & modern design in one of the community's most desirable locations. This bright & airy home backs onto Paris Park & features a semi open-to-below layout that fills the space with natural light. The separate side entrance offers future development. The main floor boasts an open-concept kitchen, dining, & living area, perfect for entertaining, plus a flex room & full bath. Upstairs, enjoy a spacious primary retreat with walk-in closet & spa-like ensuite with double sinks, soaker tub, & glass shower. Two additional bedrooms, a cozy bonus room, upstairs laundry, & a stylish family bath complete the upper level. A rear deck is included—ideal for relaxing or hosting outdoors. Exceptional value in a vibrant, growing community!

Built in 2025

Essential Information

MLS® #	E4432038
Price	\$699,900
Bedrooms	3
Bathrooms	2.50
Full Baths	2
Half Baths	1



Square Footage	2,509
Acres	0.00
Year Built	2025
Type	Single Family
Sub-Type	Detached Single Family
Style	2 Storey
Status	Active

Community Information

Address	71 Chelles Wynd
Area	St. Albert
Subdivision	ChÃ©rot
City	St. Albert
County	ALBERTA
Province	AB
Postal Code	T8N 0R6

Amenities

Amenities	See Remarks
Parking Spaces	4
Parking	Double Garage Attached

Interior

Interior Features	ensuite bathroom
Appliances	None
Heating	Forced Air-1, Natural Gas
Fireplace	Yes
Fireplaces	Mantel
Stories	2
Has Basement	Yes
Basement	Full, Unfinished

Exterior

Exterior	Wood, Composition, Stone, Vinyl
Exterior Features	Park/Reserve, Playground Nearby, Schools, Shopping Nearby
Roof	Asphalt Shingles
Construction	Wood, Composition, Stone, Vinyl
Foundation	Concrete Perimeter

Additional Information

Date Listed April 22nd, 2025

Days on Market 23

Zoning Zone 24

DATA IS DEEMED RELIABLE BUT IS NOT GUARANTEED ACCURATE BY THE REALTORS® ASSOCIATION OF EDMONTON. COPYRIGHT 2025 BY THE REALTORS® ASSOCIATION OF EDMONTON. ALL RIGHTS RESERVED. Trademarks are owned or controlled by the Canadian Real Estate Association (CREA) and identify real estate professionals who are members of CREA (REALTOR®, REALTORS®) and/or the quality of services they provide (MLS®, Multiple Listing Service®)

Listing information last updated on May 15th, 2025 at 2:02pm MDT