

\$599,999 - 3485 Keswick Boulevard, Edmonton

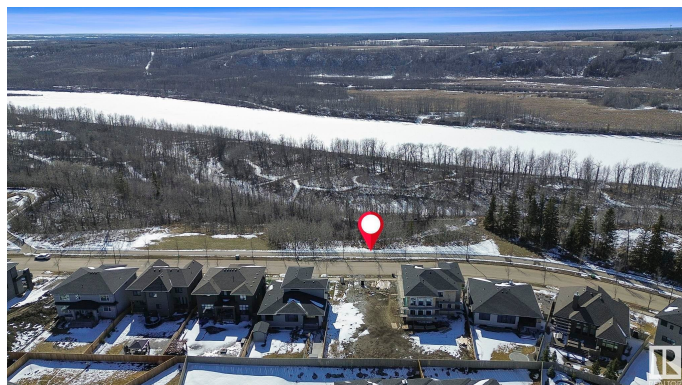
MLS® #E4429743

\$599,999

0 Bedroom, 0.00 Bathroom,
Single Family on 0.00 Acres

Keswick Area, Edmonton, AB

A One-of-a-Kind Opportunity in Prestigious Keswick on the River Estates. This is one of the final chances to secure a prime homesite in the highly sought-after Keswick on the River Estates—Edmonton's premier river valley community. Perfectly positioned to capture breathtaking, unobstructed views of the North Saskatchewan River Valley, this exceptional 7,000+ SQFT/ 55'X131' lot offers a rare opportunity to build a reverse-walkout, drive-under estate home. With a generous 46' building pocket, this parcel is ideally suited for a custom luxury residence that seamlessly blends architectural elegance with the natural beauty of its surroundings. Whether you're envisioning a sleek modern retreat or a timeless classic estate, this lot gives you the canvas for something truly extraordinary. Don't miss your chance to create a landmark home in one of Edmonton's most exclusive and picturesque neighbourhoods.



Essential Information

MLS® #	E4429743
Price	\$599,999
Bathrooms	0.00
Acres	0.00
Type	Single Family
Sub-Type	Vacant Lot/Land

Status Active

Community Information

Address 3485 Keswick Boulevard
Area Edmonton
Subdivision Keswick Area
City Edmonton
County ALBERTA
Province AB
Postal Code T6W 3S4

Exterior

Exterior Features Golf Nearby, No Back Lane, Playground Nearby, Public Transportation, Ravine View, Schools, Shopping Nearby, Ski Hill Nearby, See Remarks

School Information

Elementary Joey Moss School
Middle Joey Moss School
High Harry Ainlay School

Additional Information

Date Listed April 8th, 2025
Days on Market 26
Zoning Zone 56
HOA Fees 350
HOA Fees Freq. Annually

DATA IS DEEMED RELIABLE BUT IS NOT GUARANTEED ACCURATE BY THE REALTORS® ASSOCIATION OF EDMONTON. COPYRIGHT 2025 BY THE REALTORS® ASSOCIATION OF EDMONTON. ALL RIGHTS RESERVED.Trademarks are owned or controlled by the Canadian Real Estate Association (CREA) and identify real estate professionals who are members of CREA (REALTOR®, REALTORS®) and/or the quality of services they provide (MLS®, Multiple Listing Service®)
Listing information last updated on May 4th, 2025 at 10:02am MDT